

1. Maximum operating pressure: 3.5 MPa  
Impulse test: 0 to 3.5 MPa x 10<sup>7</sup> times
2. Easy to replace elements for upward removal.
3. Elements are common to all "U" Series (UL,UM,UH).
4. Piping method is common to the thread type and flange type.  
Companion flange is available in additional option.
5. Flow direction can be changed by turning Cover-ASSY 180 degrees.
6. Please contact us for use of fluids other than mineral oil on packing, O-rings and other parts.

Max. differential pressure of element	Option	
	Indicator pressure (All red)	Relief valve opening pressure
0.7MPa	0.3MPa	0.35MPa

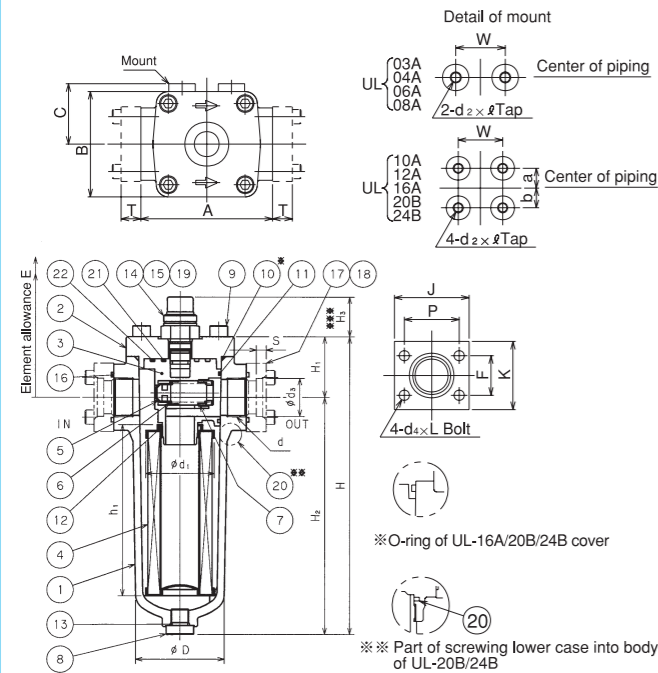
### Part List

Part No.	Part Name	Material	Qty	Remarks
22	O-ring	NBR	1	JISB 2401. 1A
21	O-ring	NBR	1	JISB 2401. 1A
20	O-ring	NBR	1	JISB 2401. 1A G-155
19	Indicator		1	
18	Cap bolt	SCM435	8	} Option
17	Companion flange	SS400	2	
16	O-ring	NBR	2	JISB 2401. 1A
15	O-ring	∅	1	1A
14	O-ring	∅	1	1B
13	O-ring	∅	1	1A
12	O-ring	∅	1	1A
11	O-ring	∅	1	1A
10	O-ring	NBR	1	JISB 2401. 1A
9	Cap bolt	SCM435	4	UL-03A~12A with washer
8	G3/8 drain plug	SCM435	1	UL-16A~24B: G1/2
7	Spring holder	SS400	1	
6	Spring	SWPA	1	} Option
5	Relief valve	SECC	1	
4	Element		1	
3	Inlet	ADC12	1	
2	Cover	ADC12	1	UL-16A~24B: FCD500
1	Body	ADC12	1	UL-16A~24B: FCD500

### Element and O-ring

Part No.	Element										
	10	11	12	13	14	15	16	21	22	h <sub>1</sub>	d <sub>1</sub>
UL-03A							G-30			85.3	62.2
UL-04A	G-75		P-32				G-40				
UL-06A		G-40		P-14			G-40			155.3	62.2
UL-08A					P-18	P-14					
UL-10A	G-100	G-55	G-45				G-55	G-25	G-45	204.5	82.2
UL-12A							G-70			254.5	102.2
UL-16A	G-110	G-65	G-60	P-18			G-100	G-30	G-55	304.5	124
UL-20B	G-135	G-95	G-80								
UL-24B											

\*\*\*H<sub>3</sub> height of indicator: Model I ...36, Model E ... 91  
Add this height to the element allowance E.



Notes: • ID "03" to "12" have O-ring groove on the body.  
• ID "16" to "24" have O-ring groove on the companion flange.

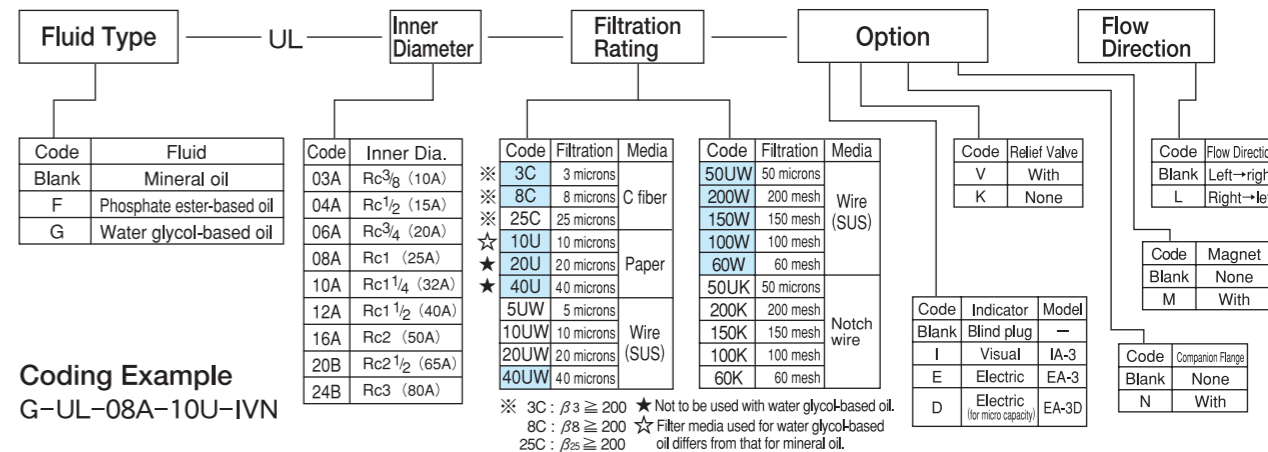
### Dimensions and Standard Flow Rates

Symbol Model	d	H	H <sub>1</sub>	H <sub>2</sub>	A	B	C	D	W	a	b	d <sub>2</sub> × ∅	Element Allowance E	Companion Flange (Option)											Mass (kg) <sup>*</sup>	Standard Flow Rate (ℓ/min)
														d <sub>s</sub>	S	T	P	F	J	K	d <sub>4</sub> × L					
UL-03A	Rc3/8											M8×14	190	17.8	8	15	42	24	60	50	M8×30	2.5	25			
UL-04A	Rc1/2	189	50	139	115	96	54	83	45				22.2	8	15	42	24	60	50	M8×30	2.5	44				
UL-06A	Rc3/4											M10×16	280	27.7	9	18	50	36	68	62	M8×35	3.0	85			
UL-08A	Rc1	270	55	215	120	96	55	83	45				34.5	9	18	50	36	68	62	M8×35	3.0	100				
UL-10A	Rc1 1/4												43.2	10	21	64	46	84	76	M10×40	5.5	155				
UL-12A	Rc1 1/2	351	69	282	150	124	65	106	60	20	25	M10×15	360	49.1	10	21	64	46	84	76	M10×40	5.5	180			
UL-16A	Rc2	433	75	358	180	150	77	132	64	20	30	M10×15	430	61.1	11	24	76	52	100	94	M12×45	21.5	360			
UL-20B	Rc2 1/2	528	96	432	215	176	95	165.2	90	25	40	M12×20	530	77.1	15	31	102	80	134	126	M16×60	37.0	600			
UL-24B	Rc3												90.0	15	31	102	80	134	126	M16×60	37.0	660				

\*Mass(kg) does not include companion flange.

Quick delivery of filters in    with mineral oil use.  
Please contact us on delivery time for others.

### Model Code



Coding Example  
G-UL-08A-10U-IVN

### Spares

#### Element

P — Fluid Type — UL — Inner Diameter — Filtration Rating  
Coding example : P-G-UL-08A-10U

#### Sealing parts set

● For element replacement (Part No. with ○ in "Element and O-ring" .)  
SP — Fluid Type — UL — Inner Diameter  
Coding example : SP-G-UL-08A

#### For overhaul

SA — Fluid Type — UL — Inner Diameter — Option  
Coding example : SA-G-UL-08A-N

### Flow Rate Chart

- ISO VG32
- Viscosity: 32 cSt (40°C)

Common to Models UL, UM and UH  
(Except for UH-20 and UH-24)

